

# Технические характеристики

## По вопросам продаж и поддержки обращайтесь:

Алматы (7273)495-231	Калининград (4012)72-03-81	Омск (3812)21-46-40	Сыктывкар (8212)25-95-17
Ангарск (3955)60-70-56	Калуга (4842)92-23-67	Орел (4862)44-53-42	Тамбов (4752)50-40-97
Архангельск (8182)63-90-72	Кемерово (3842)65-04-62	Оренбург (3532)37-68-04	Тверь (4822)63-31-35
Астрахань (8512)99-46-04	Киров (8332)68-02-04	Пенза (8412)22-31-16	Тольятти (8482)63-91-07
Барнаул (3852)73-04-60	Коломна (4966)23-41-49	Петрозаводск (8142)55-98-37	Томск (3822)98-41-53
Белгород (4722)40-23-64	Кострома (4942)77-07-48	Псков (8112)59-10-37	Тула (4872)33-79-87
Благовещенск (4162)22-76-07	Краснодар (861)203-40-90	Пермь (342)205-81-47	Тюмень (3452)66-21-18
Брянск (4832)59-03-52	Красноярск (391)204-63-61	Ростов-на-Дону (863)308-18-15	Ульяновск (8422)24-23-59
Владивосток (423)249-28-31	Курск (4712)77-13-04	Рязань (4912)46-61-64	Улан-Удэ (3012)59-97-51
Владикавказ (8672)28-90-48	Курган (3522)50-90-47	Самара (846)206-03-16	Уфа (347)229-48-12
Владимир (4922)49-43-18	Липецк (4742)52-20-81	Саранск (8342)22-96-24	Хабаровск (4212)92-98-04
Волгоград (844)278-03-48	Магнитогорск (3519)55-03-13	Санкт-Петербург (812)309-46-40	Чебоксары (8352)28-53-07
Вологда (8172)26-41-59	Москва (495)268-04-70	Саратов (845)249-38-78	Челябинск (351)202-03-61
Воронеж (473)204-51-73	Мурманск (8152)59-64-93	Севастополь (8692)22-31-93	Череповец (8202)49-02-64
Екатеринбург (343)384-55-89	Набережные Челны (8552)20-53-41	Симферополь (3652)67-13-56	Чита (3022)38-34-83
Иваново (4932)77-34-06	Нижний Новгород (831)429-08-12	Смоленск (4812)29-41-54	Якутск (4112)23-90-97
Ижевск (3412)26-03-58	Новокузнецк (3843)20-46-81	Сочи (862)225-72-31	Ярославль (4852)69-52-93
Иркутск (395)279-98-46	Ноябрьск (3496)41-32-12	Ставрополь (8652)20-65-13	
Казань (843)206-01-48	Новосибирск (383)227-86-73	Сургут (3462)77-98-35	
Россия +7(495)268-04-70	Киргизия +996(312)-96-26-47	Казахстан +7(7172)727-132	

# Aging testing system

- + Internal dimension (W x H x D) mm  
5000\*2700\*1200 (customizable based on user requirements)
- ◆ External Dimension (W x D x H) mm  
5800\*3400\*2500 (customizable based on user requirements)

Suitable for FPD, CMOS, IC and photoelectric related products and other products, parts and materials in high temperature or other harsh environment performance reliability test; especially FPD (STN-LCDs, TFT-LCDs, COLORs, FILTERs, TOUCH PANEL, OLEDs, PDP). Can help users quickly detect product conditions, provide effective directions in solving problems, fully improve production efficiency and product quality, also can provide a complete system integration.



Visualization aging equipment

## Advantages

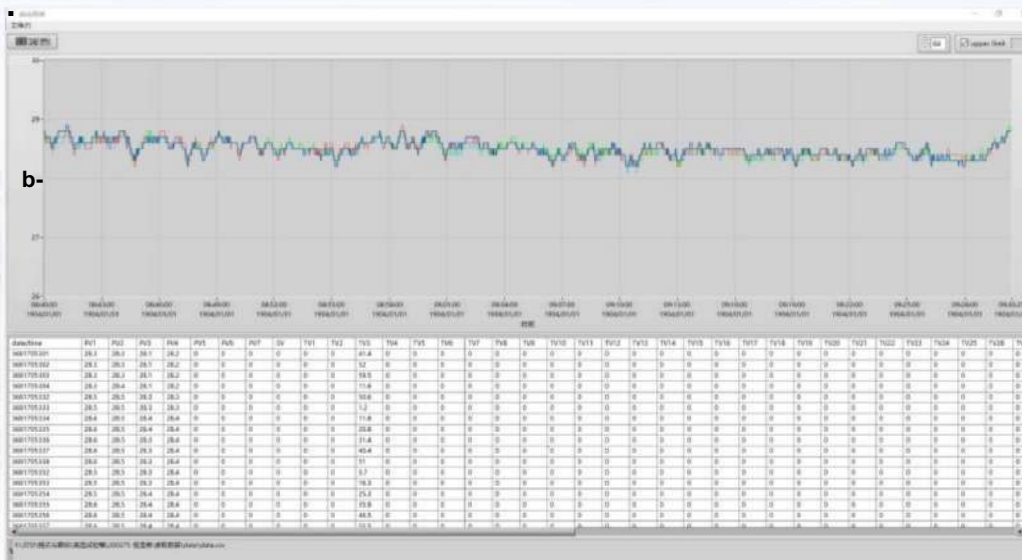
- ◆ Integrated testing equipment that can perform various environmental tests in single or multiple test zones.
- ◆ Automatic control and supply of signals and power according to the process of the test samples.
- ◆ Option to choose single equipment or turnkey projects (with fixtures, shelves, signal sources, monitoring, automation, etc.).
- ◆ Insulation layer made of high-strength PU polyurethane foam insulation material with fire resistance.
- + Control system and circuitry use high-quality components from well-known imported brands.
- ◆ Adopt new imported industrial microcomputer control system, anti-integral saturation PID, and BTC balance adjustment temperature control mode.



Drawer-type aging equipment



track-type aging equipment



Control system interface for reference

## Extraordinary production performance brings more business.

### Performance Parameter

Temperature range	RT+5°C~80°C
Control accuracy	<±0.1°C
Temperature change rate	1~3°C/min (Full range average)
Temperature deviation	<±2X
Working process	Loading->placing sample holder->connecting wires (signal wires)->power on ->aging->power off->unload
Power module	Provides various signals including LVDS, VBYONE, M1 PI, EDP, and RGB
Power specifications	Independent control of power ON/OFF, 2 channels independent VDD outputs, automatic VDD voltage compensation
Power protection	OCP/OVP/UCP/UVF settings

# COB Aging Test System

- + Inner Chamber Size (W x H x D) mm  
950\*600\*600MM (customizable upon request)
- + Outer Chamber Size (W x D x H) mm  
1800\*1900\*1050MM (customizable upon request)

Suitable for various optoelectronic products, electrical & electronic products, and other products, components, and materials for high-temperature constant environment simulation reliability tests. Help users quickly detect product conditions and provide effective solutions to solve problems, fully improving production efficiency and product quality.



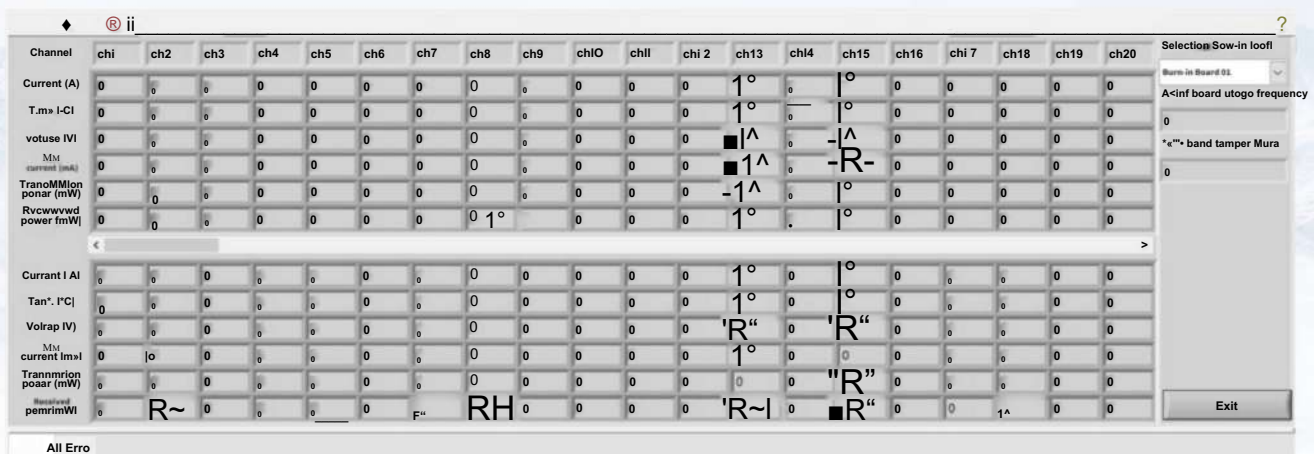


## Advantages

- ◆ Innovative precision design with customized volume and test standards according to customer requirement.
- ◆ External chamber adopts cold-rolled plate double-layer electrostatic resin high-temperature spray coating.
- ◆ Inner chamber all uses SUS#304 high-temperature resistant stainless steel seal welding.
- ◆ Insulation layer uses fire-resistant high-strength glass fiber cotton insulation materials.
- ◆ Can monitor in real-time aging module product parameters such as SN, DDM\_TX, DDM\_RX, Icc, I bias, temperature, voltage, etc.
- ◆ Supports various inputs such as dry and wet bulb PT100 (T/C, RTD, DCV).
- + Test temperature, current, voltage, time, and over-temperature protection conditions can be set, with data able to be output in real-time. When the equipment is aging under normally operation, the door locks automatically and cannot be opened.



Aging board sample reference



Software interface reference image

## Extraordinary production performance brings more business.

### Performance Parameter

Temperature Range	RT+10°C~120°C
Temperature Control Mode	Two chambers operate independently and support different temperature settings
Power Supply Voltage Range	3V-3.6V adjustable (customizable upon request)
Current Supply Capability of Module Motherboard	>4000mA, and required overcurrent protection function
Monitoring Capability	Real-time monitoring of parameters such as SN, DDM_TX, DDM_RX, Icc, I bias, temperature, and voltage of the aging module product
Communication Interface	LAN, RS485/RS232/GPIB
Working Process	Material placement -> Sample holder insertion -> Wiring (signal cable) -> Power supply aging -> Power off -> Material removal
Aging Board Module	Different VCSEL modules can be supported by replacing the holder. Same holder used for aging and testing, no need to repeatedly clamp the DUT.

**По вопросам продаж и поддержки обращайтесь:**

Алматы (7273)495-231	Калининград (4012)72-03-81	Омск (3812)21-46-40	Сыктывкар (8212)25-95-17
Ангарск (3955)60-70-56	Калуга (4842)92-23-67	Орел (4862)44-53-42	Тамбов (4752)50-40-97
Архангельск (8182)63-90-72	Кемерово (3842)65-04-62	Оренбург (3532)37-68-04	Тверь (4822)63-31-35
Астрахань (8512)99-46-04	Киров (8332)68-02-04	Пенза (8412)22-31-16	Тольятти (8482)63-91-07
Барнаул (3852)73-04-60	Коломна (4966)23-41-49	Петрозаводск (8142)55-98-37	Томск (3822)98-41-53
Белгород (4722)40-23-64	Кострома (4942)77-07-48	Псков (8112)59-10-37	Тула (4872)33-79-87
Благовещенск (4162)22-76-07	Краснодар (861)203-40-90	Пермь (342)205-81-47	Тюмень (3452)66-21-18
Брянск (4832)59-03-52	Красноярск (391)204-63-61	Ростов-на-Дону (863)308-18-15	Ульяновск (8422)24-23-59
Владивосток (423)249-28-31	Курск (4712)77-13-04	Рязань (4912)46-61-64	Улан-Удэ (3012)59-97-51
Владикавказ (8672)28-90-48	Курган (3522)50-90-47	Самара (846)206-03-16	Уфа (347)229-48-12
Владимир (4922)49-43-18	Липецк (4742)52-20-81	Саранск (8342)22-96-24	Хабаровск (4212)92-98-04
Волгоград (844)278-03-48	Магнитогорск (3519)55-03-13	Санкт-Петербург (812)309-46-40	Чебоксары (8352)28-53-07
Вологда (8172)26-41-59	Москва (495)268-04-70	Саратов (845)249-38-78	Челябинск (351)202-03-61
Воронеж (473)204-51-73	Мурманск (8152)59-64-93	Севастополь (8692)22-31-93	Череповец (8202)49-02-64
Екатеринбург (343)384-55-89	Набережные Челны (8552)20-53-41	Симферополь (3652)67-13-56	Чита (3022)38-34-83
Иваново (4932)77-34-06	Нижний Новгород (831)429-08-12	Смоленск (4812)29-41-54	Якутск (4112)23-90-97
Ижевск (3412)26-03-58	Новокузнецк (3843)20-46-81	Сочи (862)225-72-31	Ярославль (4852)69-52-93
Иркутск (395)279-98-46	Ноябрьск (3496)41-32-12	Ставрополь (8652)20-65-13	
Казань (843)206-01-48	Новосибирск (383)227-86-73	Сургут (3462)77-98-35	
Россия +7(495)268-04-70	Киргизия +996(312)-96-26-47	Казахстан +7(7172)727-132	